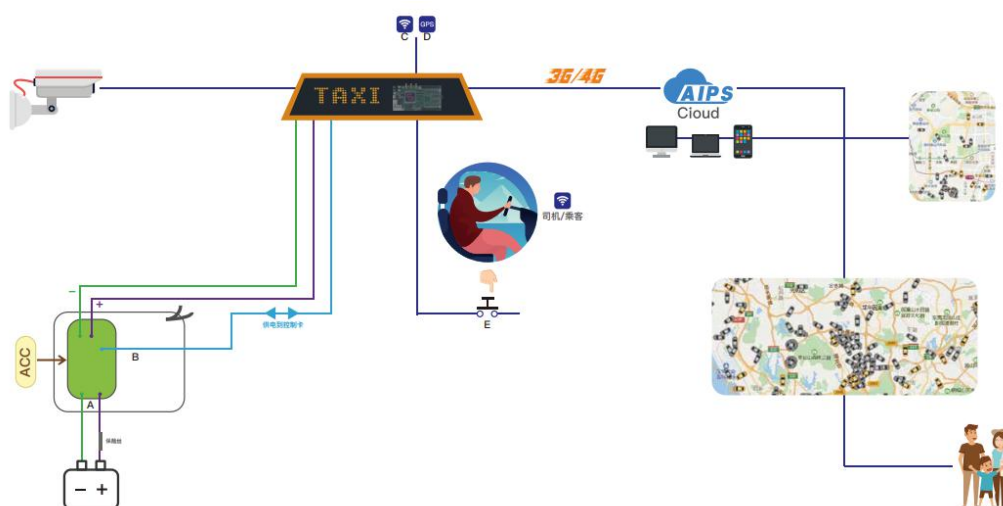


# Vehicle Sign Operation Manual



Schematic

## Scheme Principle

- (1) Support the installation of third-party APK players, fast docking platform
- (2) Control card power management circuit
- (3) Hotspot release
- (4) GPS positioning task and management
- (5) Car alarm button

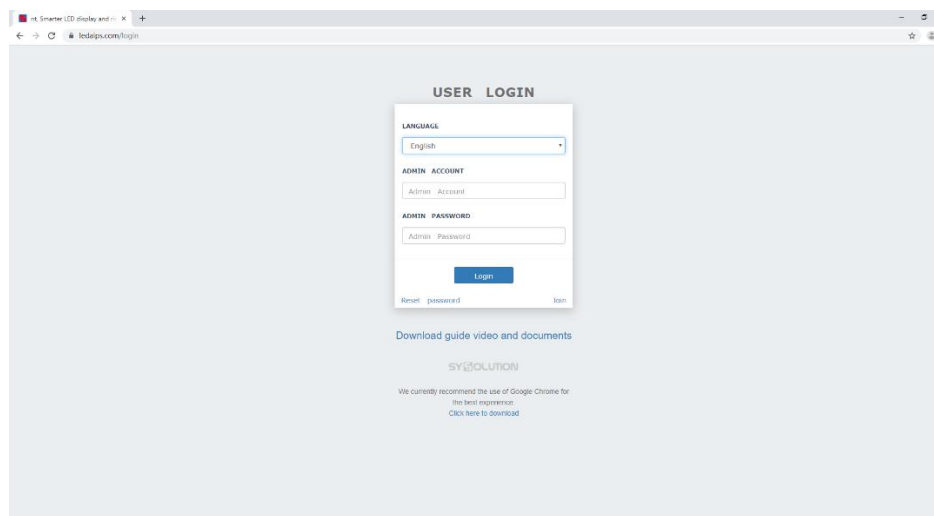
## Vehicle Sign Operation Manual Process

Login platform——upload media——create programs——send regular program tasks——configure GPS coordinate readback time——create GPS positioning delivery programs——turn on the delivery switches——send GPS delivery programs tasks——end

## Process Details

### 一、 Login Platform

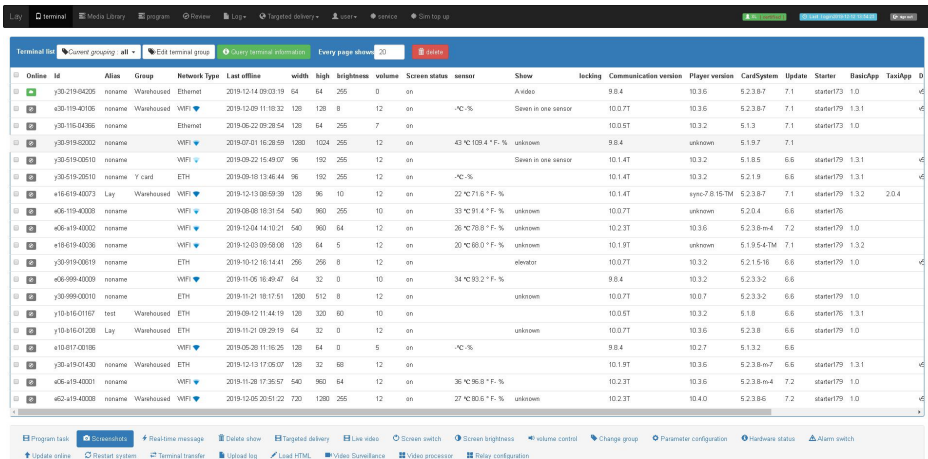
1. Open the browser (recommended Google browser), input [www.m2mled.net](http://www.m2mled.net) enter to the publishing platform login page:



## Cloud Platform Login Interface

2. Enter the administrator account and password to log in the platform

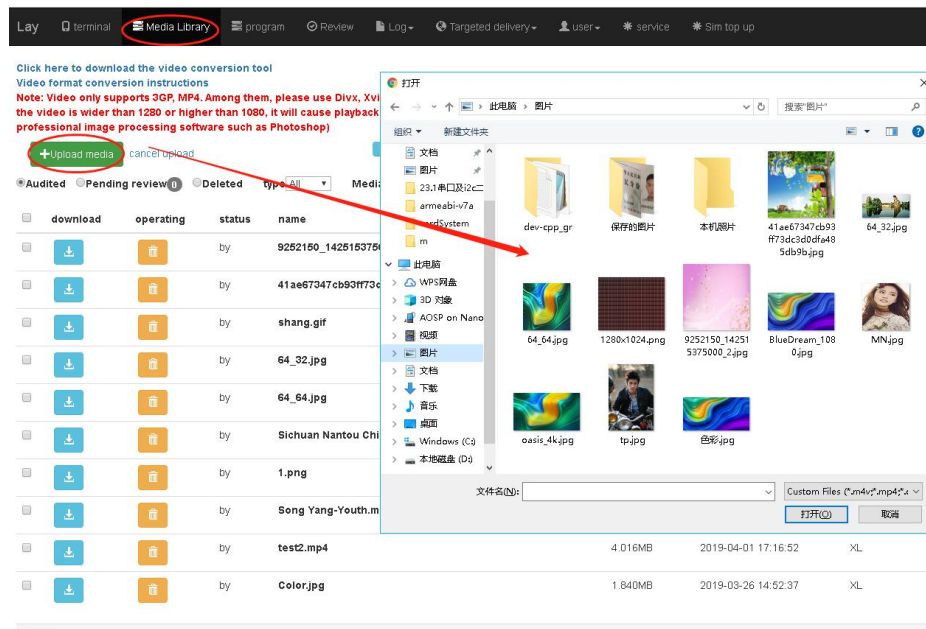
(please register first if have not a login account):



## 二、 Upload Local Materials in the Media Library

1. Enter the "Media Library" and upload the program material that to be

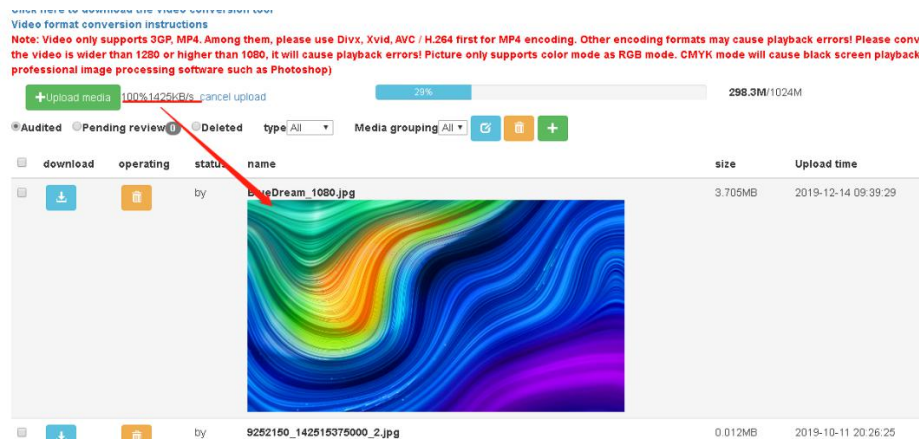
played to the platform:



2. Please pay attention when uploading, wait for the platform to indicate that

the upload progress is 100%, and you can see the materials are in the

media library list that indicate the upload is complete. At this time you can do other operations on the platform, otherwise the upload process will be suspended due to other operations:



Note: Video only supports 3GP, MP4, as for MP4 encoding please preference for using Divx, Xvid, AVC/H.264, other encoding formats may cause playback errors! Please convert the video size to the size you want to play, or use the video in the common proportion(320p ~ 720p). If the video is wider than 1280 or higher than 1080, it will cause playback errors! Picture color mode only supports RGB mode, CMYK mode will cause black screen playback. If the picture cannot be played, please change the picture color mode to RGB mode (requires professional image processing software such as Photoshop)

### 三、 Create Program

There are two types of programs: "Easy Program" and "Advanced Program".

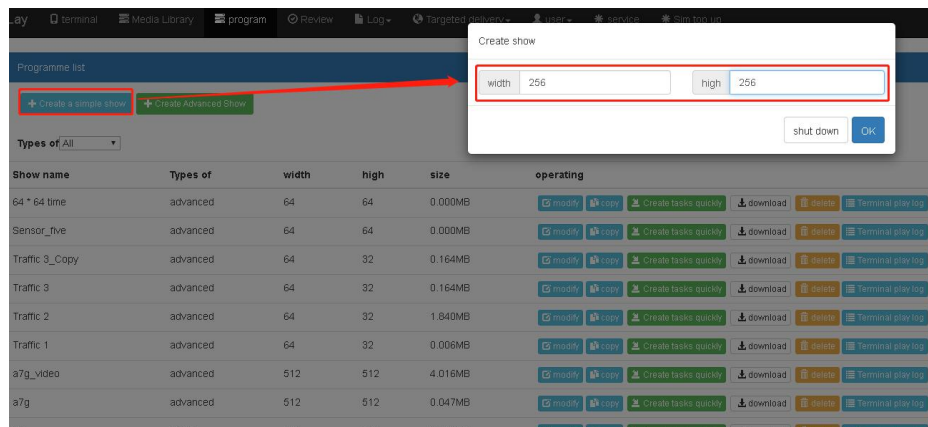
Easy Program: Support create regular pictures and video programs

Advanced Program: Support create pictures, videos, texts, clocks, weather forecasts, and more

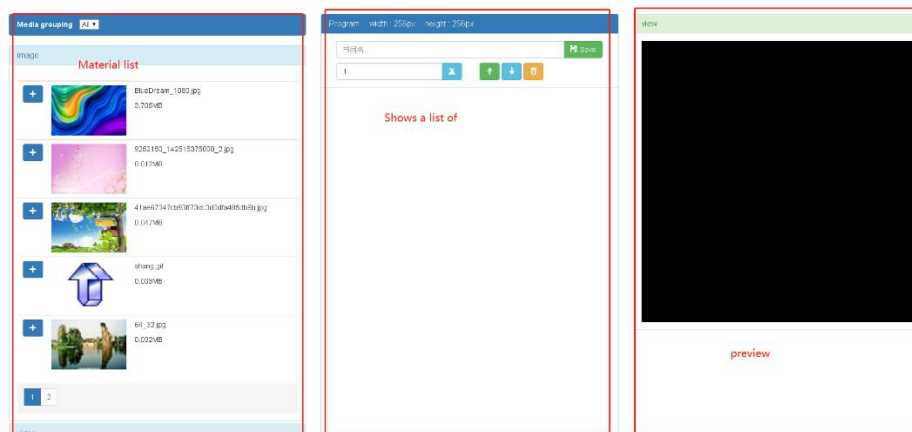
This article takes the creation of the simple program as an example:

("Create the advanced program" please refer to the AIPS cloud platform instruction manual)

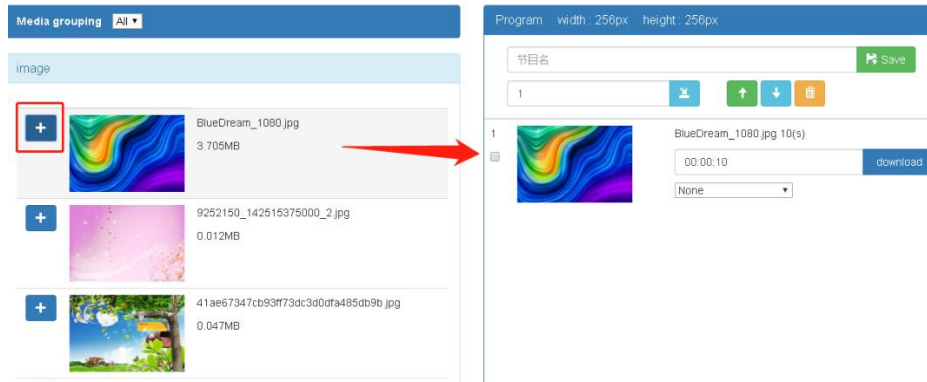
1. Click "Create Simple Program" and enter the width and height pixels of the program (that are the width and height pixels of the display):



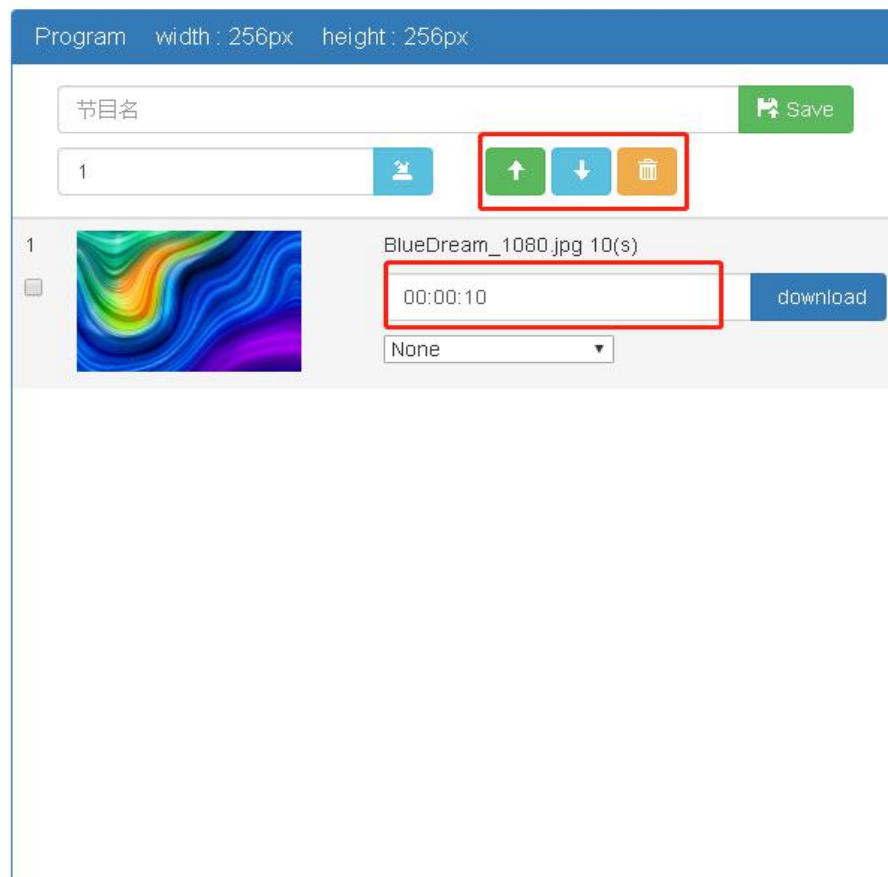
2. Enter the program editing interface. The left is the media library material, the middle is the program list, and the right is the program preview window:



- Click "+" in front of the left material to add the selected material to the program list:

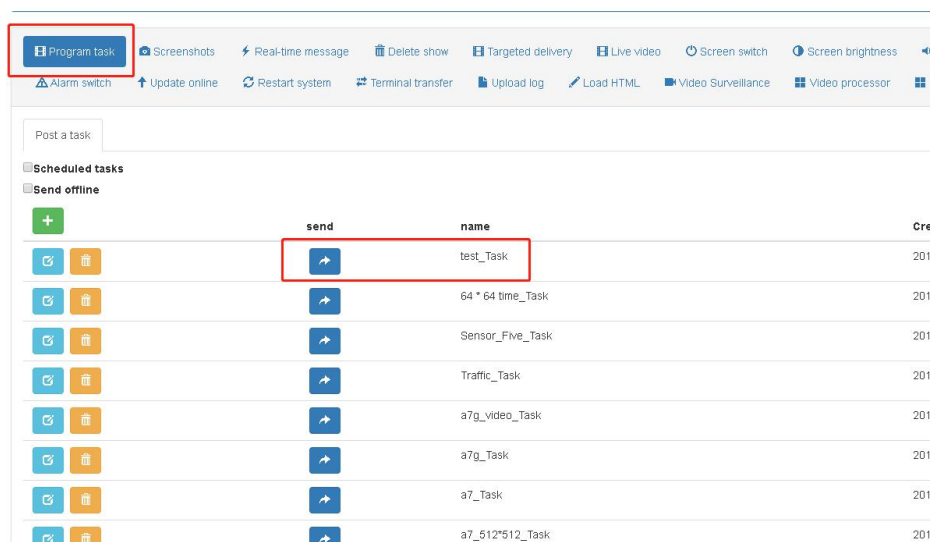


- After adding the materials, you can modify the picture playing time (unit is second) in the list area, move the playback order of the materials up and down, and delete the materials under the program list:




- After the program is finished, set a name for the program and click

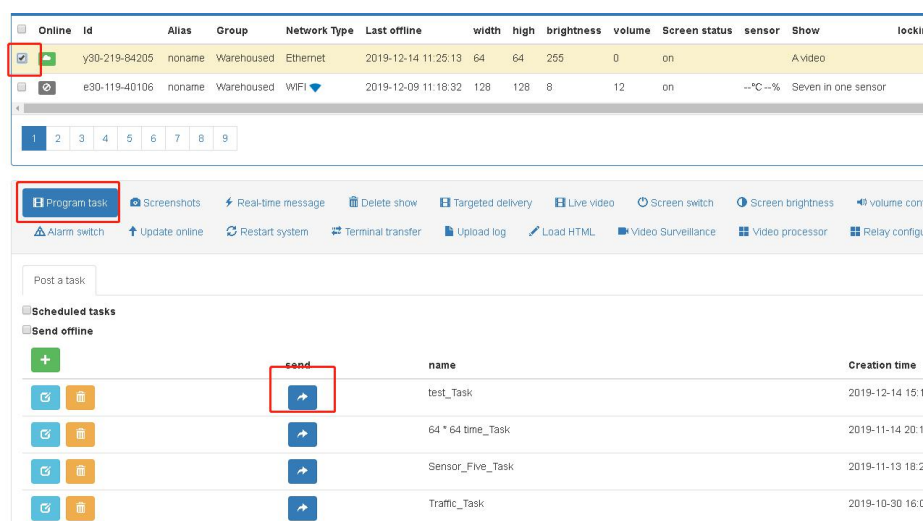




#### 四、 Send Regular Program Tasks

1. Select the terminal to send and click the send button in front of the

corresponding program "  " :



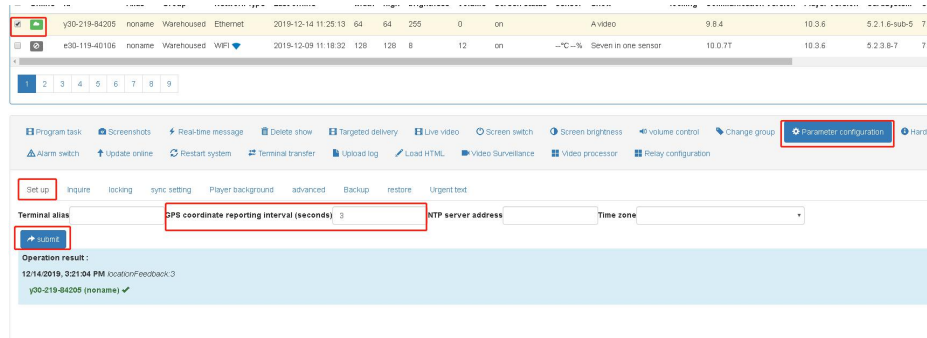
2. After successful sending, it will automatically jump to the download page. If the download is 100%, the program has been downloaded and played:



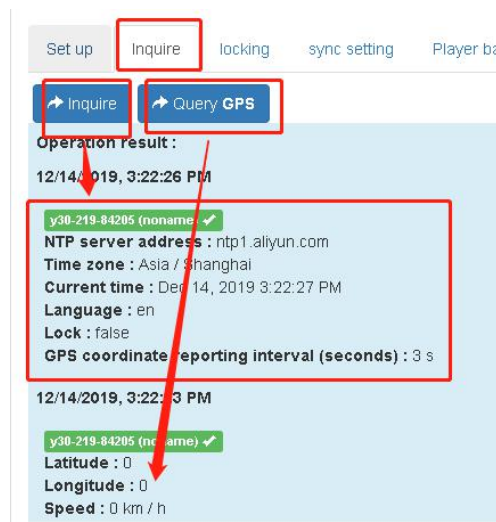
#### 五、 Configure GPS Coordinate Readback Time



1. Set the GPS positioning coordinate reporting time of the control card, "Parameter configuration"--"Settings"--"GPS coordinate reporting interval (in seconds)"--"Submit"



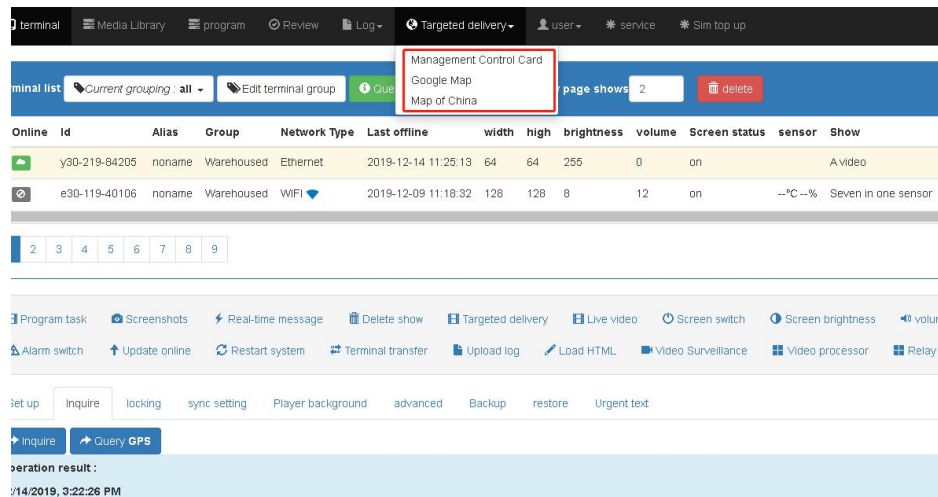
2. At this time, you can get the time zone and GPS latitude and longitude information of the control card through "Query"



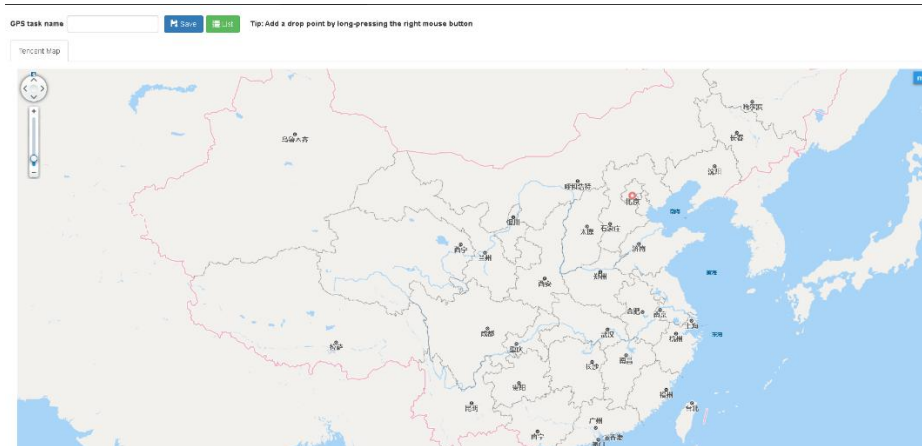
If the above query shows that there are longitude, latitude, and number of satellites, the control card has been positioned to GPS.

## 六、 Create GPS task delivery programs:

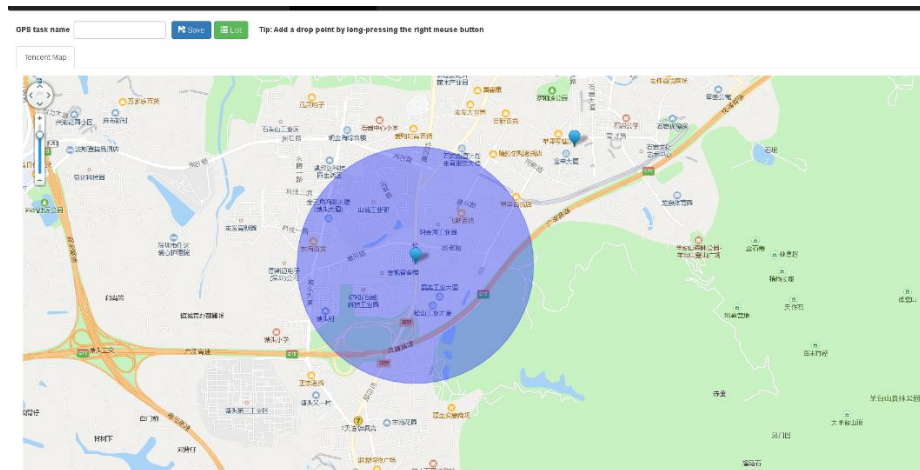
1. Enter the "GPS Task" map interface to add advertisements, (Chinese users choose to enter "China Map" , and foreign users enter "Google Map" ):



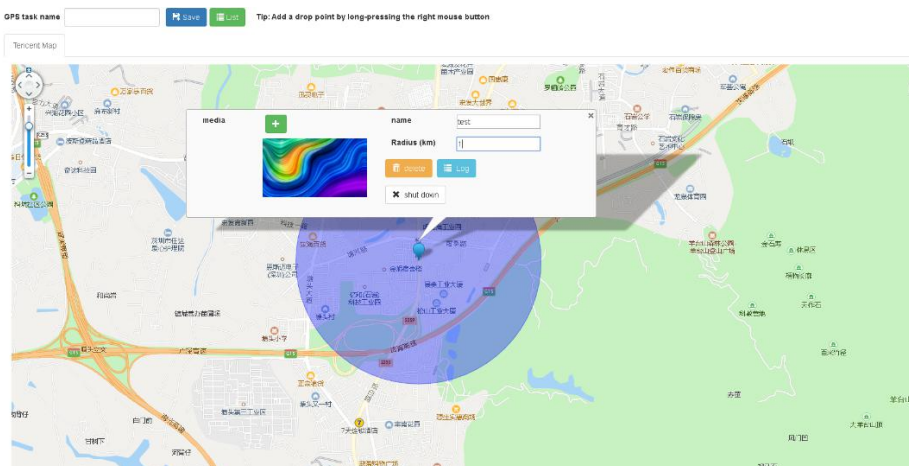
In the map, you can see the terminal that can locate the GPS position under the current account (mouse wheel can zoom in or out):



2. Add a location by long press the right mouse button on the map (Google Maps can add a location by surrounding multiple points into an irregular area)



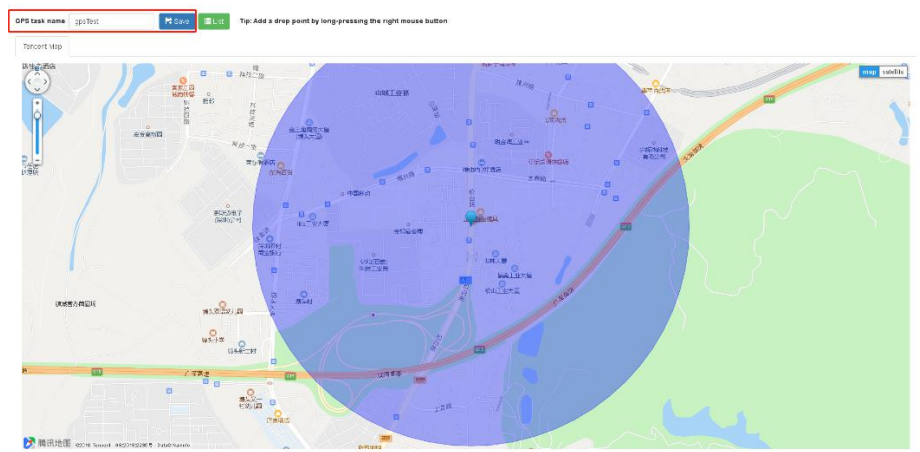
3. Click the left mouse button on the location to edit the area size and playback materials:



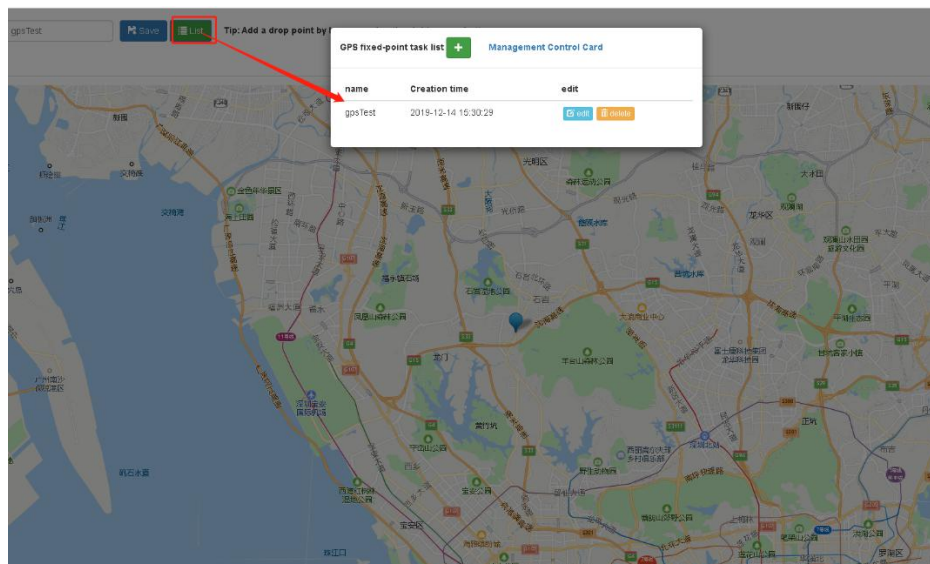
If you need to add multiple locations, please repeat the above operation.

(The multiple locations overlap system will loop playback the material of the overlap locations).

4. After editing the locations, name the GPS task and save:

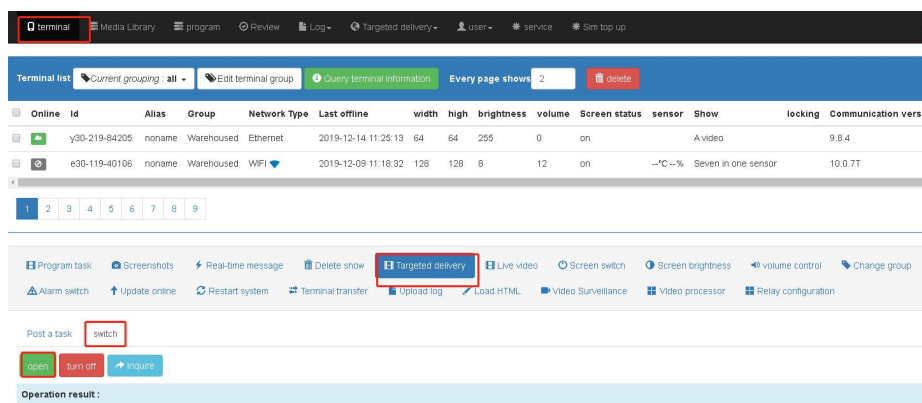


**Tips:** If you want to re-edit the edited GPS task, you can enter the modification through "List":



## 七、 Turn on the GPS Task Switch

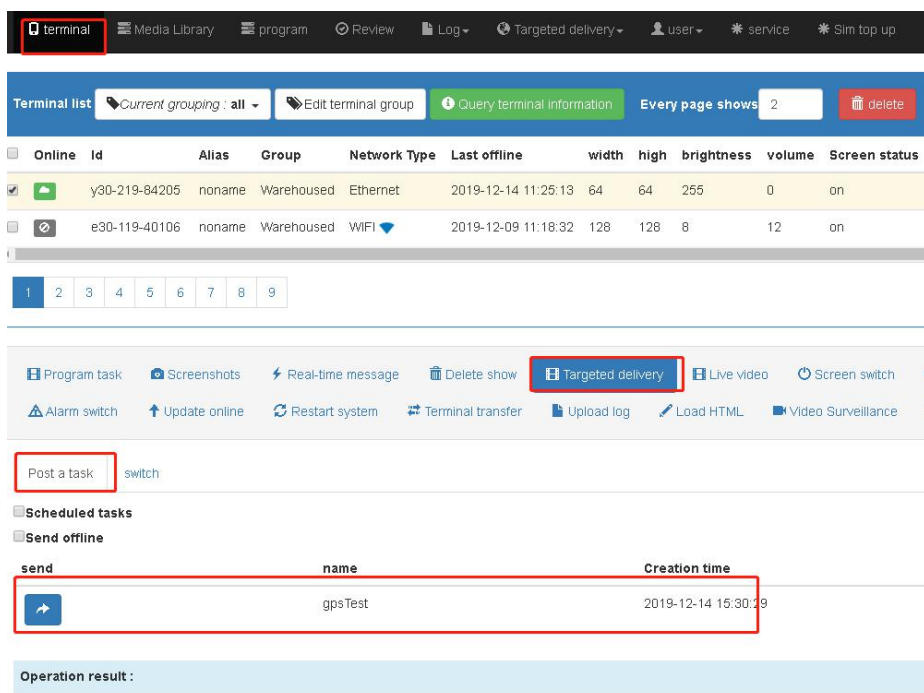
After editing the GPS task, go to the "GPS Task" function area of the "Terminal" page and turn on the GPS task switch:



## 八、 Send the GPS Task Programs

1. Select the terminal to be sent, and send the edited GPS task program in the

"Release Task":



2. After the sending is successful, as long as the terminal enters the set area, it will automatically switch to play the set GPS task, and it will automatically switch back to the regular program task when it is out of the area.

## 九、 End

**十、FAQ : The GPS task was successfully sent, but the program was not played ?**

1. Whether the GPS antenna is placed outdoors
2. Query whether GPS can find latitude and longitude
3. Is there a setting for "GPS coordinate return time"
4. Whether the GPS task switch is on